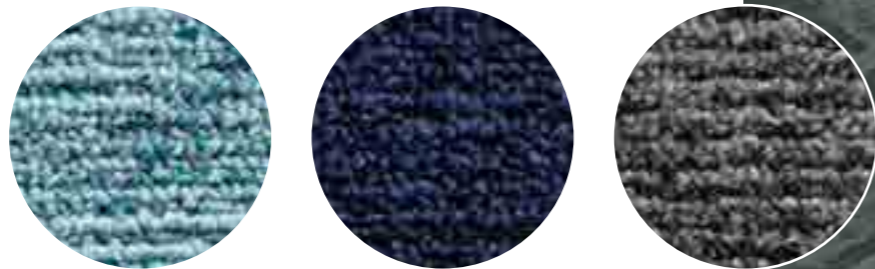
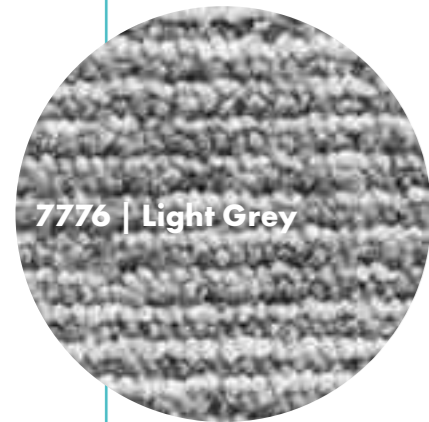




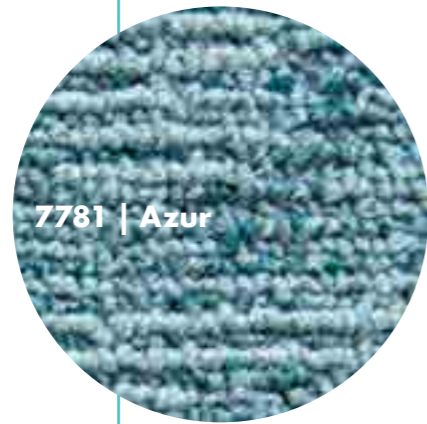
# PULA

<b>Herstellungsart</b>	Tufting
<b>Definition</b>	1/10 Schlinge gemustert
<b>Polmaterial</b>	100 % PA6 Sol. DYED/Econyl®
<b>Polgewicht</b>	ca. 620 g/m <sup>2</sup>
<b>Gesamtgewicht</b>	ca. 4.200 g/m <sup>2</sup>
<b>Gesamtdicke</b>	5,8 mm
<b>Polhöhe</b>	3,0 mm
<b>Rückenausstattung</b>	Polyflex
<b>Format</b>	50 x 50 cm
<b>Special</b>	Akustikrücken auf Anfrage





7776 | Light Grey



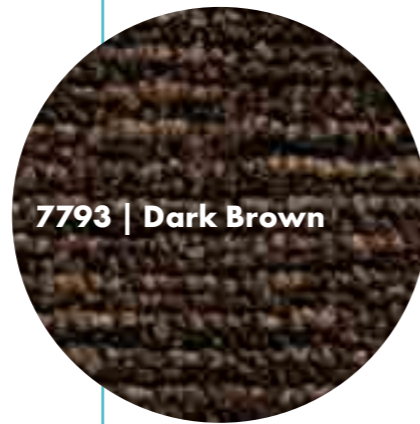
7781 | Azur



7791 | Sand



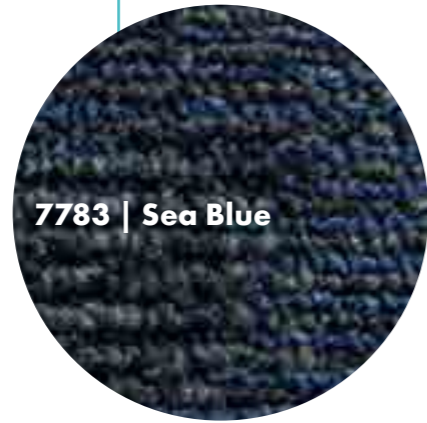
7777 | Dark Grey



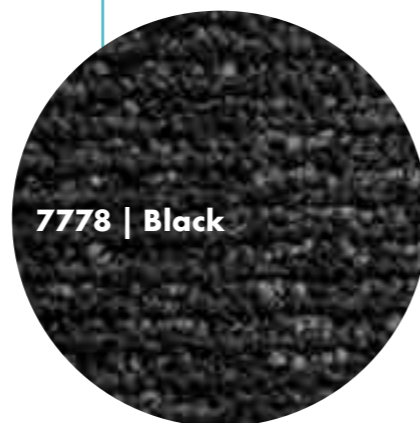
7793 | Dark Brown



7792 | Brown



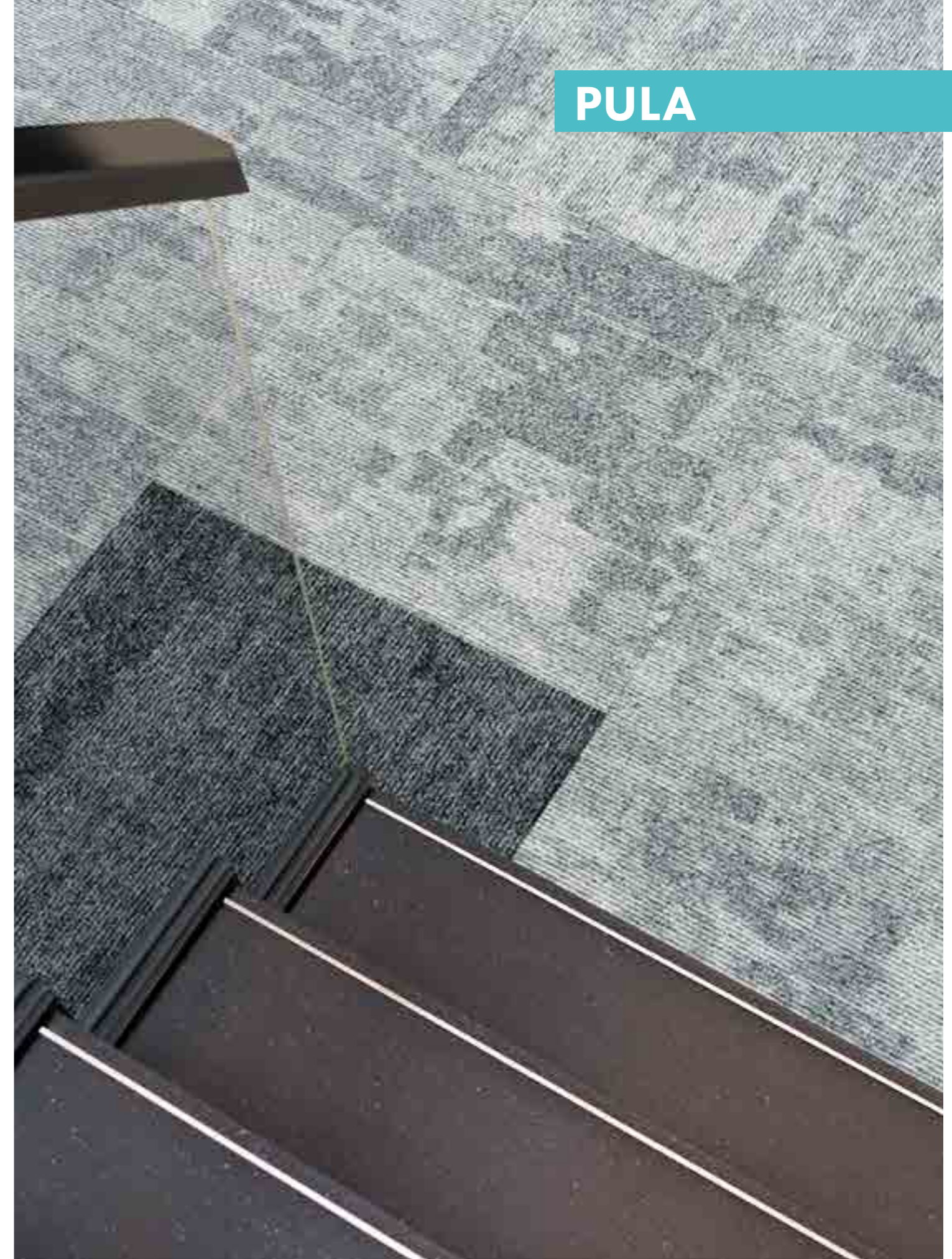
7783 | Sea Blue



7778 | Black



7785 | Royal Blue



# PULA